


## ARTICLE

## Coastal and Marine Ecology

# Herbivory through the lens of ecological processes across Pacific coral reefs

Tye L. Kindinger<sup>1</sup>  | Thomas C. Adam<sup>2</sup> | Julia K. Baum<sup>3</sup> | Sean A. Dimoff<sup>3</sup> | Andrew S. Hoey<sup>4</sup> | Ivor D. Williams<sup>1</sup>

<sup>1</sup>Ecosystem Sciences Division, Pacific Islands Fisheries Science Center, National Oceanic and Atmospheric Administration, Honolulu, Hawaii, USA

<sup>2</sup>Marine Science Institute, University of California, Santa Barbara, California, USA

<sup>3</sup>Department of Biology, University of Victoria, Victoria, British Columbia, Canada

<sup>4</sup>College of Science and Engineering, James Cook University, Townsville, Queensland, Australia

**Correspondence**

Tye L. Kindinger  
Email: [tye.kindinger@noaa.gov](mailto:tye.kindinger@noaa.gov)

**Funding information**

National Oceanic and Atmospheric Administration (NOAA) Coral Reef Conservation Program, Grant/Award Number: 31349

**Handling Editor:** Hunter S. Lenihan

**Abstract**

Coral reefs are in global decline primarily due to climate change. Herbivory is often viewed as key to maintaining coral-dominated reefs, and herbivore management is gaining traction as a possible strategy for promoting reef resilience. The functional impact of herbivorous fishes has typically been inferred from total biomass, but robust estimates of ecological processes are needed to better inform management targets. Here, we provide a framework to calculate rates of herbivory across Pacific reefs. We synthesized available observations of foraging metrics in relation to fish body size and found considerable variation, even among closely related species. We then applied these allometric functions to survey data and calculated rates of herbivory for acanthurids and scarines, which make up the vast majority of herbivorous fish biomass in the Pacific. Estimated rates of algal consumption, area scraped, and bioerosion varied across islands, with noticeable differences that may align with the relative influence of human population density among underlying herbivore functional groups. We found no evidence of compensatory relationships among herbivore processes whereby decreasing rates in one type of herbivory is offset by increasing rates in another. We observed nonlinear, positive relationships between fish biomass and rates of herbivory. Yet, for a given biomass, the corresponding rates of herbivory varied among regions, and we observed instances where islands with the greatest biomass did not also have the highest rates of herbivory. Islands with the largest size classes of herbivores did not consistently exhibit greater rates of herbivory, and we did not find a clear, consistent pattern between the number of fish species and corresponding rates of herbivore processes. Cropping *Acanthurus* spp. provided the greatest proportion of algal consumption at every island, yet no single species accounted for the majority of this process, whereas we identified parrotfish species that provided >75% of scraping or bioerosion at certain islands. Our results emphasize the importance of considering the species and size composition of herbivore assemblages when estimating processes, rather than relying on total biomass alone. Lastly, we highlight gaps in foraging observations and

This is an open access article under the terms of the [Creative Commons Attribution](https://creativecommons.org/licenses/by/4.0/) License, which permits use, distribution and reproduction in any medium, provided the original work is properly cited.

© 2024 The Authors. *Ecosphere* published by Wiley Periodicals LLC on behalf of The Ecological Society of America.

additional work needed to further broaden our ability to quantify the ecological processes of herbivores.

#### KEYWORDS

bioerosion, coral reef fishes, ecological process, ecosystem function, grazing, herbivory, tropical Pacific

## INTRODUCTION

Marine ecosystems continue to be threatened by global change (Doney et al., 2012; Harley et al., 2006; Poloczanska et al., 2013) in conjunction with local human impacts (Gissi et al., 2021; He & Silliman, 2019; Todd et al., 2019). Together, these stressors are leading to biodiversity loss, the reorganization of communities, and ultimately altering ecosystem functioning and the goods and services they provide (Bannar-Martin et al., 2018; Gamfeldt et al., 2015; Hobbs et al., 2009; Pecl et al., 2017; Worm et al., 2006). Coral reefs are in serious decline worldwide (Gardner et al., 2003; Hoegh-Guldberg et al., 2007; Hughes, Kerry, et al., 2018), primarily due to climate change with extreme thermal events predicted to increase in both frequency and severity (Hughes, Anderson, et al., 2018; van Hooidonk et al., 2016). Such thermal anomalies have resulted in global-scale coral bleaching events (Eakin et al., 2019; Hughes, Anderson, et al., 2018; Skirving et al., 2019) with subsequent shifts in the composition of coral assemblages (Burgess et al., 2021; Graham et al., 2015; Hughes, Kerry, et al., 2018; Moore et al., 2012; Pratchett et al., 2021; Smith et al., 2014), even on remote reefs that are removed from local human pressures (Baum et al., 2023; Baumann et al., 2022).

Herbivory is widely considered to be a core ecological process for maintaining coral-dominated reefs (Bellwood et al., 2004; Brandl et al., 2019) by mediating competition between corals and algae (Hughes et al., 2007). Herbivore management has been proposed as a key management intervention to promote resistance and recovery of reefs—and thereby persistence—in a changing climate (Bellwood et al., 2004; Chung et al., 2019; Cinner et al., 2009; Graham et al., 2013; McClanahan et al., 2012; Mumby & Steneck, 2008; Russ et al., 2015; Williams et al., 2019). Herbivorous fishes vary in their feeding modes and thus functional impact on the benthos (Hoey, 2018). Broad functional groupings are based on feeding substrata, whereby browsers feed predominately on fleshy macroalgae and associated epibiota and grazers feed on substrata colonized by the epilithic algal matrix (EAM; Bellwood et al., 2006). Grazers may be further subdivided into scrapers, excavators, croppers, and detritivores based on the amount of the underlying

substrata removed when feeding (Hoey & Bellwood, 2008, 2011; Robinson et al., 2019). Body size can further influence the amount of material removed by individuals, with larger fish removing disproportionately greater amounts of benthic material (Lange et al., 2020; Lokrantz et al., 2008; Nash et al., 2013). Thus, in the face of disturbance, diverse feeding modes and size structures of herbivores can be important for maintaining reefs in a coral-dominant state (Burkepile & Hay, 2008; Lefcheck et al., 2019; Rasher et al., 2013).

Total herbivore biomass has often been used to infer the provision of ecological processes from local fish assemblages on coral reefs; however, this metric does not incorporate variation in the functional role of individual fish both within and among species. To account for this variation, recent studies have developed methods that integrate species- and size-specific data on fish abundance, feeding behavior, and resource intake to estimate rates of herbivory on coral reefs (Kelly et al., 2017; Lange et al., 2020; Perry et al., 2012, 2022; Robinson et al., 2019; Ruttenberg et al., 2019). These methods, however, hinge on in situ foraging observations that are both time-intensive and costly. Efforts to leverage existing observations through data compilation and synthesis can reduce (or eliminate) the additional field effort needed to assess local herbivore communities, thereby broadening the utility of reef-monitoring data to inform management. For example, foraging observations that have been compiled and summarized allow users to calculate parrotfish bioerosion as an input of reef erosion in carbonate budgets (Perry et al., 2012, 2018, 2022).

To understand how herbivory varies in space, we provide a framework to estimate ecological processes across Pacific coral reefs. We first synthesize available data on fish foraging metrics, considering all herbivorous fishes, and examine species- and genus-specific relationships with body size (and temperature for bite rate) within each functional group (i.e., browser, detritivore, cropper, scraper, and excavator). We then apply the resulting allometric equations to fish surveys recently conducted by the National Coral Reef Monitoring Program (NCRMP; funded by the United States National Oceanic and Atmospheric Administration [NOAA] Coral Reef Conservation Program [CRCP]) to calculate rates of

ecological processes by acanthurids and scarines (surgeonfish and parrotfish, respectively), which make up the vast majority of herbivore biomass across the Pacific (Heenan et al., 2016). Our results reveal the ecological processes of herbivorous fishes differ across islands and regions due to variance in the combination of fish biomass, species composition, and size structure.

## METHODS

### Synthesis of foraging metrics

We compiled data sourced from scientific publications, technical reports, and unpublished datasets (Appendix S1: Table S1, Section S1) that were collected in tropical waters, excluding locations in the Atlantic Ocean (Appendix S1: Figure S1). We synthesized foraging metrics of herbivorous fishes that occur across the U.S. Pacific Islands, examining relationships between individual body size and bite rate (in bites per minute), bite area (in square centimeters), bite volume (in cubic centimeters), and proportion of bites that leave grazing scars on the substrate. See Appendix S1: Section S1 for detailed descriptions of data selection, extraction, and preparation.

We expected bite rates to differ with water temperature (Bellwood, 1995; Hoey, 2018; Smith, 2008), yet temperatures at the time of foraging observations were almost never reported. Thus, we estimated the mean monthly sea-surface temperature (SST) from satellite data for every observation (Appendix S1: Section S1) to at least account for broader scale regional variance in temperature. Given that bite rates can further vary across time of day (Bellwood, 1995; Bonaldo & Bellwood, 2008; Khait et al., 2013; Polunin et al., 1995) and depth (Brokovich et al., 2010; Fox & Bellwood, 2007), we also compiled these metadata when reported by studies (Appendix S1: Section S1); however, only about a third of studies provided such information, preventing direct assessment of these variables as covariates. We did, however, review the reported times of day and excluded any observations that were conducted outside of the overall range of the majority of studies (06:00–18:30; Appendix S1: Figure S2), such as observations conducted at night. In contrast to bite rate, we expected bite area, bite volume, and the proportion of bites that result in grazing scars to be mostly dependent on the morphology and body size of fish.

We excluded observations of zero total bites and any bite areas or volumes of zero (i.e., bites that did not result in a measurable mark). Only among proportions of bites that left grazing scars did we maintain zeros since all studies reported them in a consistent manner. The resulting datasets per species consisted of individual observations

(raw data) and mean responses and errors from pooled observations (aggregate data), or a combination of both. We analyzed responses that encompassed an overall range in fish size of at least 10 cm total length (TL), and a minimum sample size of five raw or three aggregate values. In instances where we did not have enough observations to assess the bite area of a parrotfish but could assess the bite volume for that species (or vice versa), we converted between area and volume using bite depths of 0.01 cm for scrapers and 0.15 cm for bioeroders (Bellwood, 1995).

We modeled foraging metrics per species and per genus within functional group (hereafter “function-genus”) as a function of body size as follows: negative binomial generalized linear models (GLMs) with a log link function for over-dispersed bite-rate data, power regressions of bite area and volume, and logarithmic regressions via binomial GLMs with a logit link function for proportion of scars. Among bite rates, we further assessed the additive effect of SST since we did not expect temperature to alter the functional relationship between bite rate and body size. We used meta-analytical models or GLMs as appropriate to analyze datasets with aggregate data (Stijnen et al., 2010). We incorporated *study* as a random effect for models of all raw or all aggregate data from multiple studies and *replicate* nested within *study* to account for the hierarchical data structure for models of a combination of raw and aggregate data. In models with aggregate data, weights consisted of the inverse SE (bite rate, area, and volume) and sample size (proportion of scars), capped between the overall 5th and 95th percentiles to prevent any single weight from greatly overpowering all other observations.

### Ecological processes from survey data

To calculate herbivory across the jurisdictional regions of the U.S. Pacific Islands, we applied the synthesized relationships between foraging metrics and body size to recent surveys conducted by the NCRMP. All of the synthesized equations and summaries of data that informed each model are available in a public repository (<https://doi.org/10.6084/m9.figshare.23672010.v1>). NCRMP surveys occurred in Guam and the Commonwealth of the Northern Mariana Islands (2017), American Samoa (2018), the Pacific Remote Islands Area (2018), and Hawaii (2019) and the Northwestern Hawaiian Islands (2017). Survey effort was allocated around each island or atoll in accordance with the area of foreereef stratified by depth bin: shallow (>0–6 m), mid (6–18 m), and deep (18–30 m). Adhering to this proportional allocation, sites were then randomly distributed within each stratum. Fish surveys at each site consisted of stationary point

counts (SPC) conducted by a pair of divers conducting simultaneous surveys in adjacent cylindrical plots, each 15 m in diameter. Divers visually estimated the number and size of fish to the nearest centimeter TL within each of their respective cylinders (see Ayotte et al., 2015; Heenan et al., 2017, for more details). SPC surveys can under-represent herbivore biomass (Williams et al., 2010) and the density of less mobile (sedentary) acanthurids (Samoilys & Carlos, 2000) relative to the more widely used belt transect method (Caldwell et al., 2016); thus, our estimates of herbivory and biomass may be conservative.

We focused on the processes of the main herbivores in the Pacific, acanthurids and scarines (Heenan et al., 2016), which were also the fish with an ample amount of synthesized foraging functions. Individuals were further defined by their functional groups (browser, detritivore, cropper, scraper, and excavator) based on the observed species and size; this further accounted for known shifts in function with size for several species (Green & Bellwood, 2009; Heenan et al., 2016). We calculated foraging metrics for each observed fish, using higher level equations of function-genus when species-specific equations were unavailable. The resulting values were then used as inputs to calculate individual rates of algal consumption for acanthurids (browsers, detritivores, and croppers) and browsing scarines (*Calotomus* spp.), and area scraped and bioerosion for scraper and excavator parrotfishes:

$$\begin{aligned} \text{Algal consumption (kg ind.}^{-1}\text{ year}^{-1}) \\ = \text{bites (min}^{-1}) \times \text{biomass per bite (g dry mass/10}^3) \\ \times 60 \text{ (min)} \times \text{hours of daylight} \times 365 \text{ days,} \end{aligned}$$

$$\begin{aligned} \text{Area scraped (m}^2\text{ ind.}^{-1}\text{ year}^{-1}) \\ = \text{bites (min}^{-1}) \times \text{bite area (cm}^2)/10^4 \times P(\text{scar}) \\ \times 60 \text{ (min)} \times \text{hours of daylight} \\ \times \text{proportion of daytime feeding} \times 365 \text{ days,} \end{aligned}$$

$$\begin{aligned} \text{Bioerosion (kg ind.}^{-1}\text{ year}^{-1}) \\ = \text{bites (min}^{-1}) \times \text{bite vol (cm}^3) \times P(\text{scar}) \\ \times \text{carb density (g cm}^{-3})/10^3 \times 60 \text{ (min)} \\ \times \text{hours of daylight} \times \text{proportion of daytime feeding} \\ \times 365 \text{ days.} \end{aligned}$$

Algal biomass removed per bite (in grams of dry mass/10<sup>3</sup>) was calculated as  $4 \times 10^{-8} \times (\text{TL})^{3.3307}$  for acanthurids and  $5 \times 10^{-10} \times (\text{TL})^{4.3744}$  for browser scarines as defined by Kelly et al. (2017). We used 12 h of daylight for the islands closest to the equator (Howland, Baker, Kingman, Palmyra, and Jarvis of the Pacific Remote Islands Areas) and 10 h for all other islands. We used 0.833 for excavators and 0.877 for scrapers as the

proportions of daytime feeding (adapted from Bellwood, 1995). Diurnal feeding patterns of acanthurids have not been well documented; thus, we did not include proportional feeding as a component of algal consumption in order to remain consistent between estimates of acanthurids and browser scarines. Using values reported in the Western, Central, and South Pacific regions from Perry et al. (2018), we calculated  $1.45 \pm 0.20 \text{ g cm}^{-3}$  as the mean density of reef carbonate (“carb density”). This value was similar to the lower end of the range reported in Hawaii ( $1.46\text{--}2.08 \text{ g cm}^{-3}$ ; Ong & Holland, 2010), as well as mean values in the Chagos Archipelago ( $1.52 \text{ g cm}^{-3}$ ; Lange et al., 2020) and Maldives ( $1.44 \text{ g cm}^{-3}$ ; Morgan & Kench, 2016) in the Indian Ocean.

Individual rates were combined with density data (number of individuals per square meter) consisting of species-size counts divided by the area of the survey cylinder ( $\pi \times 7.5^2$ ) to calculate community-level annual rates of each process per unit area (in square meters). We also calculated fish biomass using length-to-weight conversion parameters from FishBase (Froese & Pauly, 2021; summarized in Heenan et al., 2017). Herbivore biomass and rates of processes were averaged between each pair of adjacent survey cylinders to generate site-level estimates. Similar to previous efforts (Heenan et al., 2016), we inspected site-level estimates and defined outlier values as those greater than the 99% interquartile range. These observations tended to consist of encounters with extremely large schools of individual species that introduce large variability in the data. We therefore capped outliers at the respective 99% quantiles. We calculated summary statistics by averaging across sites within each depth stratum, which we then weighted by the area of each stratum when pooling up to the spatial unit of island or atoll. We used Gamma GLMs with a log link function to test whether herbivore processes correlate with fish biomass and regressions to test for correlations between processes. For all models, we first tested interactions with *region* and conducted post hoc Tukey’s tests as needed for pairwise comparisons between regions.

All data manipulation, analysis, and visualization were conducted in R (version 3.6.2; R Core Team, 2021) with the packages metafor (version 2.4.0; Viechtbauer, 2010), lme4 (version 1.1.26; Bates et al., 2015), and glmmTMB (version 1.1.4; Brooks et al., 2017).

## RESULTS

### Synthesis of foraging metrics

We synthesized relationships between body size and parameters that inform algal and reef-substrate removal



for a total of 47 fish species from 11 genera (Appendix S1: Table S2). Information about bite rate was the most abundant in regards to the variety of species and genera observed and the geographical spread of studies (Appendix S1: Figure S1). Bite rate relationships varied among species (Appendix S1: Table S3) and function–genus groups (Appendix S1: Table S4). Bite rates significantly decreased with body size (except among *Scarus flavipectoralis*, *Acanthurus blochii*, and *A. nigricans*) and significantly increased with SST for all but *A. blochii* (Appendix S1: Figures S3 and S4). Across bite rate observations, SST values ranged from 22 to 30°C yet were skewed in frequency toward the warmer end of the range (Appendix S1: Figure S2). Of the 39 studies reporting bite rates, only about a third provided information about the water depth ( $n = 12$  studies) or time of day ( $n = 13$  studies) of the observations. Among those studies, only three conducted observations in depths greater than 10 m (0.067% of observations), and the majority occurred at depths less than 5 m (Appendix S1: Figure S2).

We detected positive relationships in both bite area and volume with body size across almost all parrotfish species and function–genera with a sufficient amount of data (Appendix S1: Tables S3 and S4, Figures S5 and S6). Almost half of the parrotfish species and all of the parrotfish function–genera we could assess significantly increased in the proportion of bites that left grazing scars with increasing body length (Appendix S1: Tables S3 and S4, Figure S7). Across all three of these foraging metrics, excavators tended to have larger values than scrapers (Appendix S1: Figures S5–S7).

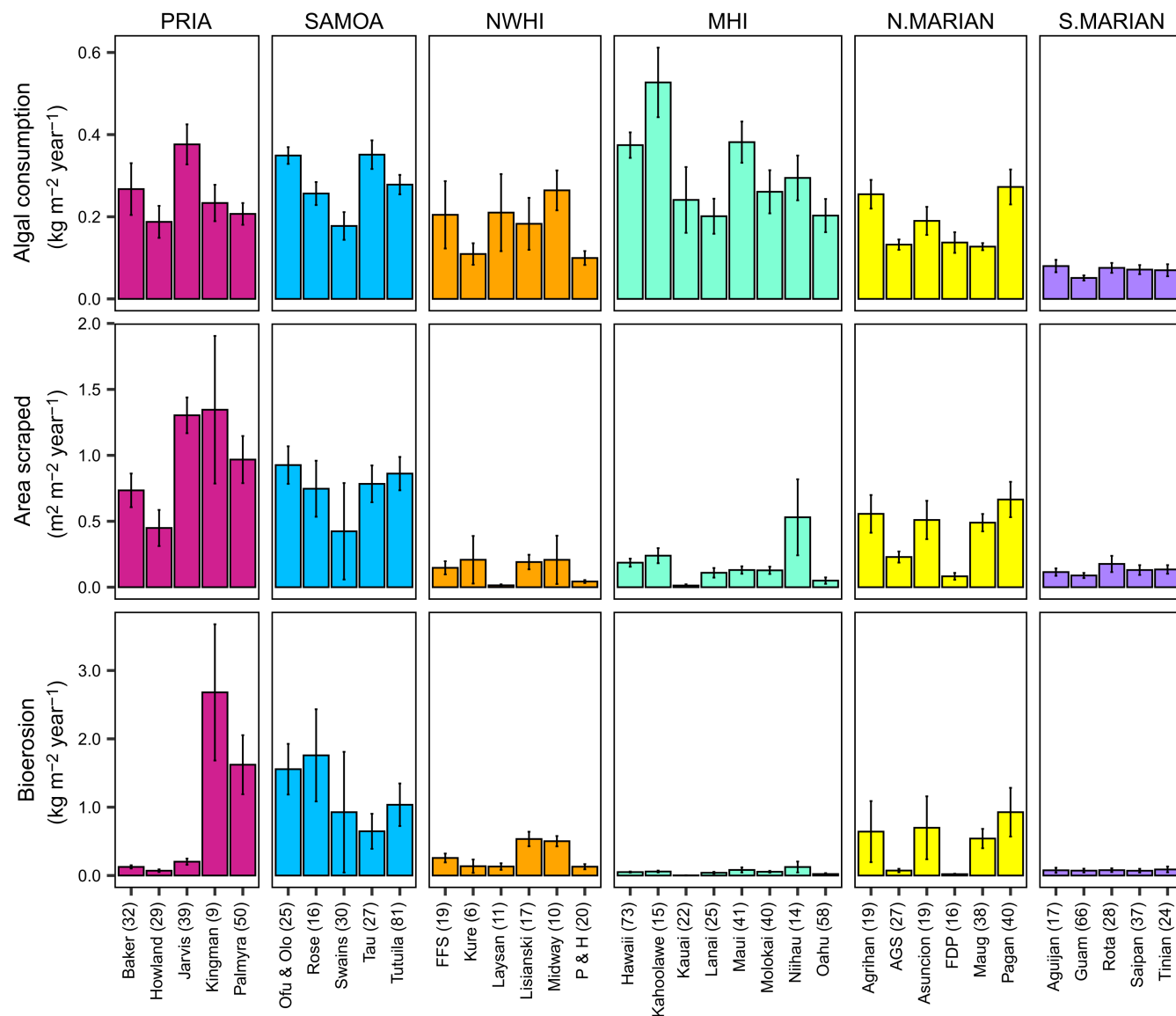
## Ecological processes across the Pacific

Across the Pacific, we observed variability in herbivore processes across regions, as well as among islands within regions (Figure 1). Estimated algal consumption of browsers, detritivores, and croppers ranged by about an order of magnitude, from the lowest mean value at Guam (S. Marian) of  $0.051 \pm 0.006 \text{ kg m}^{-2} \text{ year}^{-1}$  to the greatest at Kahoolawe (MHI) of  $0.527 \pm 0.085 \text{ kg m}^{-2} \text{ year}^{-1}$ . Kingman Reef (PRIA) had the highest mean levels of both area scraped ( $1.346 \pm 0.559 \text{ m}^2 \text{ m}^{-2} \text{ year}^{-1}$ ) and bioerosion ( $2.680 \pm 0.997 \text{ kg m}^{-2} \text{ year}^{-1}$ ) by scraper and excavator parrotfishes, whereas Kauai (MHI) had the lowest values which were respectively about two and three orders of magnitude lower (area scraped:  $0.013 \pm 0.009 \text{ m}^2 \text{ m}^{-2} \text{ year}^{-1}$ ; bioerosion:  $0.002 \pm 0.002 \text{ kg m}^{-2} \text{ year}^{-1}$ ). Herbivore processes increased nonlinearly with fish biomass and further varied among regions (Appendix S1:

Table S5; Figure 2). Algal consumption was the highest in the Main Hawaiian Islands and lowest in the Southern Marianas, whereas area scraped and bioerosion tended to be lower in the Northwestern Hawaiian Islands and Main Hawaiian Islands, respectively (Appendix S1: Table S6).

Although there were overall positive trends between biomass and herbivory, we also observed several islands with the greatest biomass that did not also have the highest rates of a given process (Figure 2). For example, among estimates of parrotfish-only processes (scrapers and excavators), Jarvis Island (PRIA) was an outlier; despite having the greatest biomass in the Pacific, area scraped and bioerosion did not scale accordingly and were lower than expected (Figure 2b,c). Removal of these values from Jarvis Island resulted in the interaction between fish biomass and region no longer being significant in best-fit models (Appendix S1: Table S5). In contrast, islands with the lowest biomass tended to align with the lowest rates of processes (Figure 2). For example, both biomass and herbivory in the Southern Marianas region tended to be lower in magnitude relative to the other regions (Figure 2); in particular, algal consumption there was the lowest of all the Pacific regions (Appendix S1: Table S6). Furthermore, the ranges in these values were greatly limited in the Southern Marianas and had yet to reach levels in biomass that corresponded with a disproportionate increase in herbivory (Figure 2).

Among island assemblages, we did not find a clear, consistent pattern between the number of fish species and corresponding rates of herbivory (Appendix S1: Figure S8). Similarly, islands with the largest size classes of herbivores did not always correspond with the highest levels of processes (Appendix S1: Figure S9), although islands with the lowest biomass (e.g., Southern Marianas region) or rates of processes tended to lack larger sized herbivores (Appendix S1: Figure S9). The degree of accordance in proportional provision of herbivores to ecological processes versus biomass also varied across islands and regions (Appendix S1: Figures S10 and S11). Cropping *Acanthurus* spp. consistently provided the greatest proportion of algal consumption at every island (Figure 3a), and proportional consumption by some of these species exceeded their proportional biomass within certain islands (Appendix S1: Figure S10), yet no single species within any function–genus accounted for  $\geq 75\%$  of this process (Appendix S1: Figure S8a). Relatively larger proportions of feeding by excavator parrotfishes, particularly *Chlorurus* spp., tended to occur among islands with higher rates of scraping and especially bioerosion (Figure 3b,c). This explains why the high fish biomass at Jarvis Island, likely driven by the large

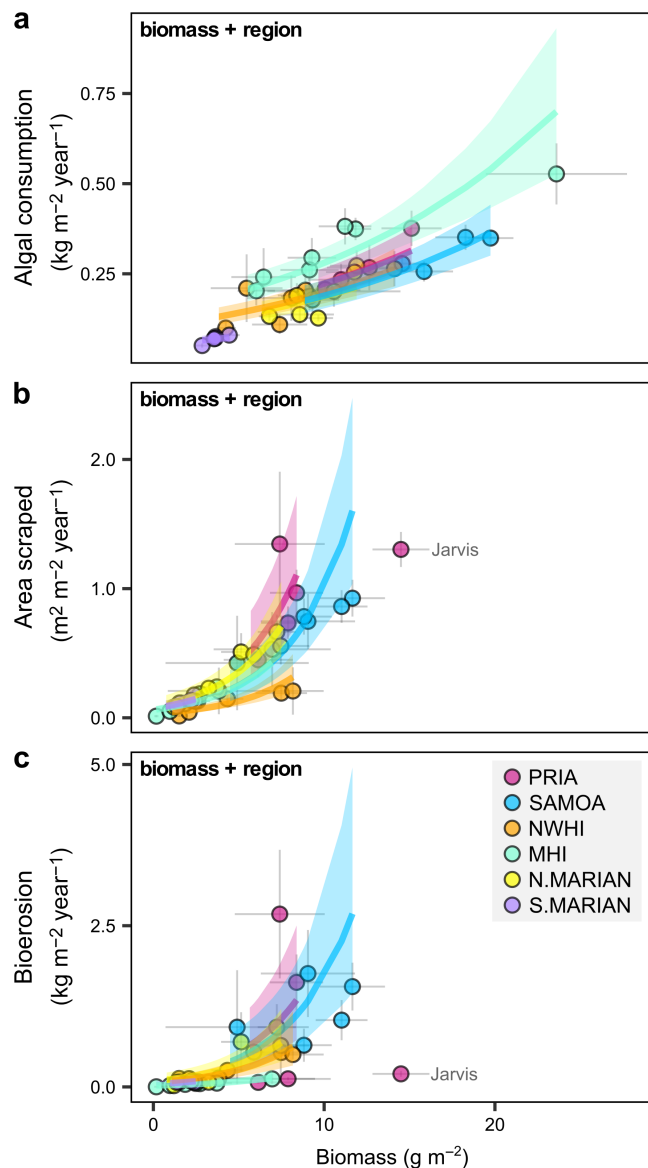


**FIGURE 1** Herbivore processes across Pacific coral reefs. Error bars are SE of the mean. Algal consumers are acanthurids (browsers, detritivores, and croppers) and browsing scarines (*Calotomus* spp.), and the remaining parrotfishes are scrapers and bioeroders. Numbers in parentheses indicate the number of sites surveyed per island. Islands are abbreviated as follows: AGS, Aguijan, Guguan, and Sarigan combined; FDP, Farallon de Pajaros; FFS, French Frigate Shoals; Ofu & Olo, Ofu and Olosega; P & H, Pearl and Hermes.

size classes present (Appendix S1: Figure S9b,c), did not reach predicted rates of scraping and bioerosion for its region (Figure 2b,c); scraper and excavator *Scarus* spp. provided the majority of these processes rather than *Chlorurus* spp. (Figure 3b,c).

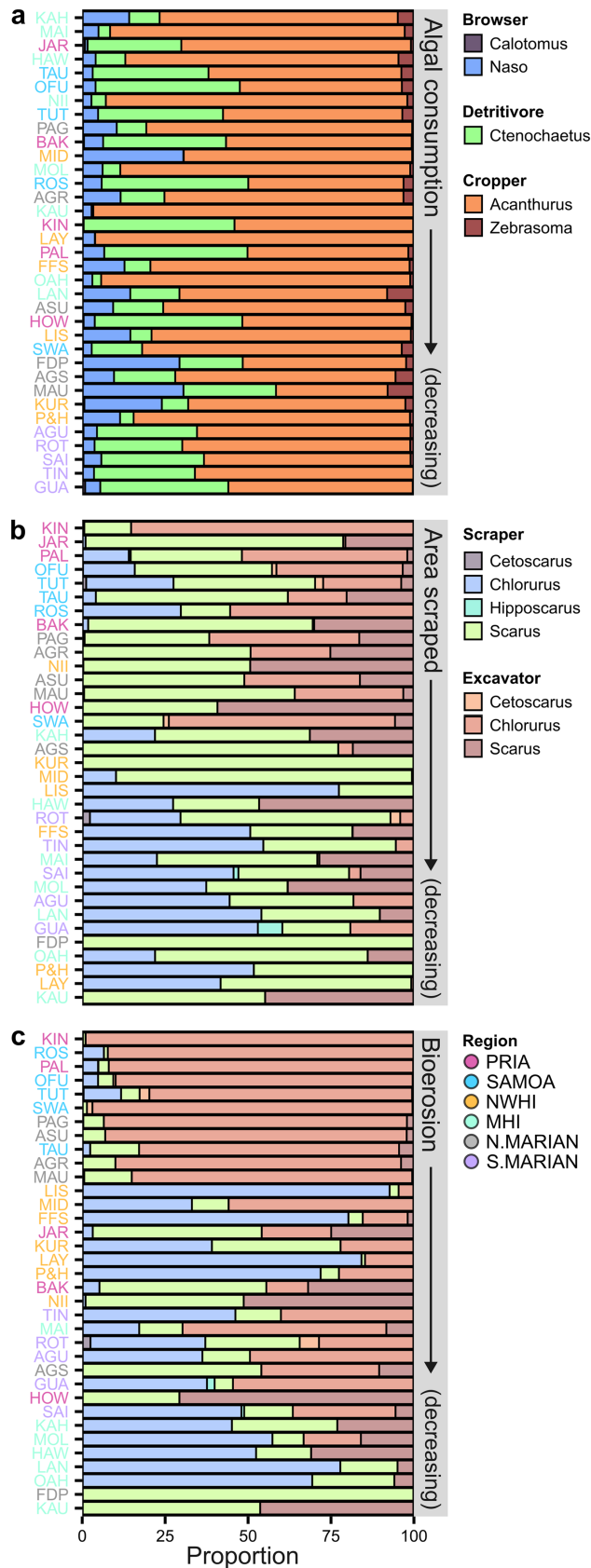
Per island, excavator parrotfishes tended to provide larger proportions of bioerosion than scraping, and scraper parrotfishes typically contributed larger proportions of scraping than bioerosion (Figure 3b,c). The excavating parrotfish *Chlorurus microrhinos* (CHMC) provided 84.7% of area scraped and 97.7% of bioerosion at Kingman Reef (Appendix S1: Figure S8b,c), as well as >80% of bioerosion at three other islands with relatively high rates (Palmyra Atoll = 82.7%, Asuncion

Island = 90.9%, Swains Island = 95.6%; Appendix S1: Figure S8c). Across several Northwestern Hawaiian Islands, scraping parrotfish contributed the majority of area scraped (*Chlorurus spilurus* [CHSL]: 77.2% at Lisianski Island; *Scarus dubius* [SCDU]: 86.7% at Kure Atoll and 89.2% at Midway Atoll) and bioerosion (*Chlorurus perspicillatus* [CHPE]: 81.7% at Laysan Island and 76.3% at Lisianski Island). Bioerosion was relatively low at Farallon de Pajaros and Lanai, and was provided mostly by scrapers *Scarus forsteni* (SCFO; 76.0%) and smaller sized *C. spilurus* (CHSL; 77.8%), respectively (Appendix S1: Figure S8c). Where identified, proportional area scraped and bioerosion by these parrotfishes also tended to outpace their proportional biomass (Appendix S1: Figure S11).

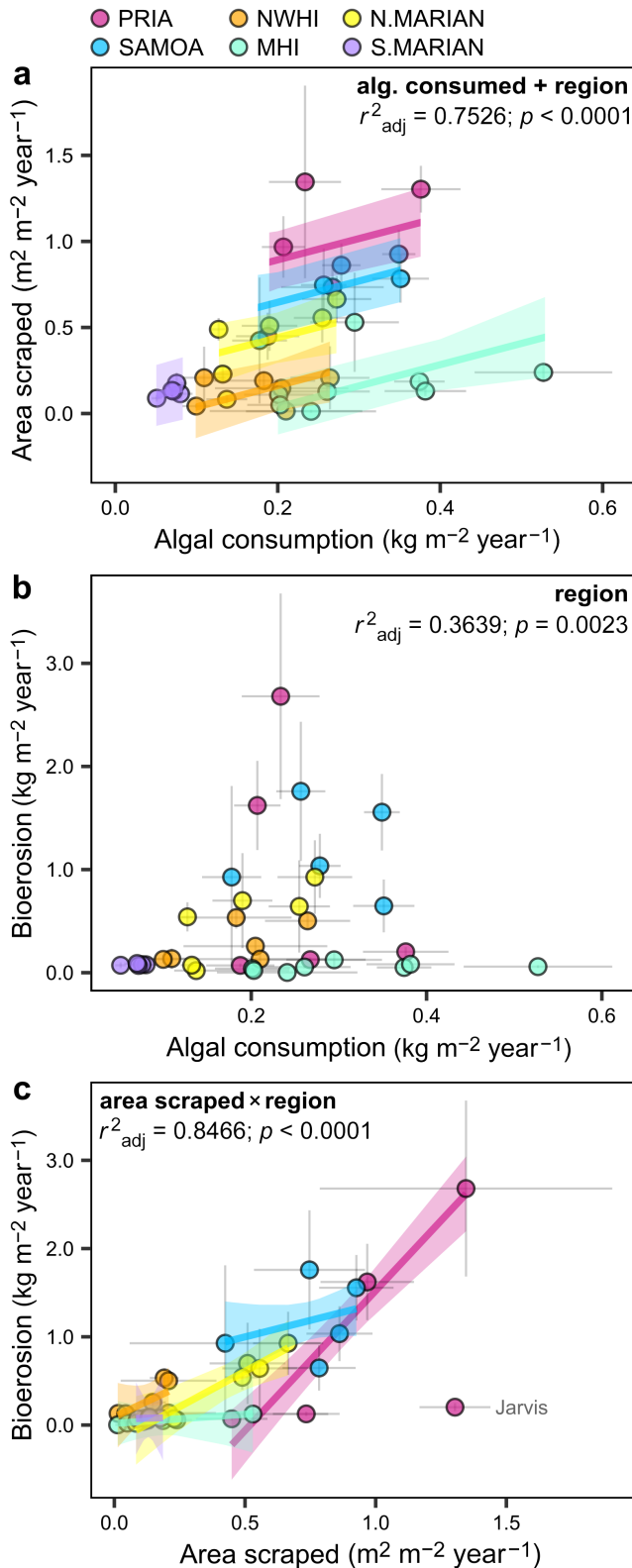


**FIGURE 2** Relationships between herbivore processes in relation to fish biomass and region across Pacific coral reefs. Algal consumers are acanthurids (browsers, detritivores, and croppers) and browsing scarines (*Calotomus* spp.), and the remaining parrotfishes are scrapers and bioeroders. Error bars are SE of the mean. Trend lines and 95% CIs are from best-fit models, with significant variables in bold inside each plot. Where labeled, Jarvis Island was excluded from final models as an outlier.

Although in the Main Hawaiian Islands we found a contrast consisting of the highest rates of algal consumption and lowest rates of bioerosion in the Pacific (Appendix S1: Table S6; Figure 2), we did not detect an overall relationship between these processes (Appendix S1: Table S7; Figure 4b). Area scraped, however, increased with algal consumption (Appendix S1: Table S7; Figure 4a). Among models testing for correlations between herbivore processes, regional variance was consistently significant



**FIGURE 3** Proportional herbivore processes per fish genus within functional group (“function-genus”) per island. Islands are ordered from top to bottom in decreasing rates of process. Island labels are color-coded by region.



**FIGURE 4** Relationships between herbivore processes and region. Algal consumers are acanthurids (browsers, detritivores, and croppers) and browsing scarines (*Calotomus* spp.), and the remaining parrotfishes are scrapers and bioeroders. Error bars are SE of the mean. Trend lines and 95% CIs are from best-fit models, with significant variables in bold inside each plot. Where labeled, Jarvis Island was excluded from final models as an outlier.

(Appendix S1: Tables S7 and S8; Figure 4). Exclusion of Jarvis Island had no influence on the final variables in best-fit models of correlations with algal consumption (Appendix S1: Table S7); we used the full dataset when assessing those correlations. We did, however, remove Jarvis Island when examining the relationship between parrotfish-only processes (Figure 4c), which resulted in a significant interaction between area scraped and region (Appendix S1: Table S7).

## DISCUSSION

Across the Pacific, we detected regional variance in the ecological processes of herbivorous fishes. Overall, we observed nonlinear, positive relationships between fish biomass and rates of herbivory, consistent with parrotfish scraping and erosion in the Maldives and Chagos Archipelago (Lange et al., 2020; Taylor et al., 2022). For a given level of biomass, the corresponding rates of herbivory varied among regions, and we observed instances where islands with the greatest biomass did not also have the highest rates of herbivory. This was especially apparent at Jarvis Island, where despite having the greatest parrotfish biomass in the Pacific, the area scraped and bioerosion rates were lower than predicted. This is likely attributed to *Scarus* spp. providing most of the scraping and bioerosion at Jarvis Island, whereas islands with the highest rates predominantly feature large contributions from excavator *Chlorurus* spp. Indeed, our synthesis of foraging metrics revealed *Chlorurus* spp. reach larger bite areas and volumes than *Scarus* spp., thus having a larger functional impact (Hoey, 2018). We conclude that total biomass of herbivorous fishes per se is an imperfect predictor of ecological processes, and we emphasize the importance of fish identity underlying herbivory, which was similarly concluded in the Florida Keys (Ruttenberg et al., 2019) and Indo-Pacific regions (e.g., Bellwood et al., 2012; Lange et al., 2020; Robinson et al., 2019; Yarlett et al., 2018).

Rates of algal consumption in the Main Hawaiian Islands were among the highest in the Pacific, which may complement the region's low rates of parrotfish herbivory. We did not, however, find evidence of compensatory relationships among herbivore processes whereby decreasing rates in one type of herbivory is offset by increasing rates in another (i.e., negative correlations). In fact, we found algal consumption is decoupled from bioerosion across the Pacific, and correlations between remaining combinations of processes were generally positive. Parrotfish processes in the Florida Keys are also positively correlated in certain reef zones (Ruttenberg et al., 2019), whereas others have shown these processes are



decoupled in the Indo-Pacific (e.g., Bellwood et al., 2012; Hoey & Bellwood, 2008). The discrepancy in algal consumption correlating with parrotfish scraping but not bioerosion across the Pacific may be linked to human population density (Bellwood et al., 2012; Edwards et al., 2014; Heenan et al., 2016) and fishing (Bejarano Chavarro et al., 2014; Houk et al., 2012; Mccauley et al., 2014; Sabater & Carroll, 2009), which heavily influence large excavating parrotfishes and browsers, and less so scrapers, croppers, or detritivores. We found browsers contributed relatively low proportions of algal consumption, especially browsing parrotfishes that tend to be rare and have a limited impact on algae removal in the Indo-Pacific (Hoey & Bellwood, 2008, 2009; Michael et al., 2013). Thus, we might expect a weaker signal of human drivers underlying algal consumption and area scraped than bioerosion in the Pacific. Indeed, this hypothesis may further explain the noticeable differences in herbivory we observed among regions, including the highest algal consumption and lowest bioerosion in a more heavily populated region, the Main Hawaiian Islands.

Islands with the lowest herbivore biomass typically also had the lowest rates of herbivory, and contributions from larger herbivores tended to be lower or the largest size classes were missing altogether. This was particularly apparent in the Southern Marianas region where levels of biomass and herbivore processes were greatly limited in range at the lower end of Pacific-wide values. Yet overall, any patterns in the number of size classes (or species) that appeared to align with the variance in rates of herbivory were not consistently upheld by all islands in the Pacific. Importantly, formal assessments of the role of biodiversity in enhancing herbivory should consider multiple spatial scales (i.e., site and region) when relating diversity metrics to biomass-standardized herbivory rates (Lefcheck et al., 2019).

Similar to parrotfish herbivory in the Atlantic (Ruttenberg et al., 2019) and locations within the Great Barrier Reef and Indo-Pacific (Bellwood et al., 2012; Hoey & Bellwood, 2008; Loffler et al., 2015), we were able to identify key parrotfishes that accounted for the majority of scraping or bioerosion at certain islands, yet algal consumption was typically conducted by a greater mix of species. Locations where herbivore processes were dominated by one or two species may warrant further consideration for targeted management, but these results may also suggest increased vulnerability of ecosystem function to species loss than islands with more diverse assemblages (Hooper et al., 2005; Lefcheck et al., 2015, 2019). Nonetheless, islands with speciose communities could still have limited functional redundancy if there is little overlap in functional roles (Bellwood et al., 2003, 2004). For example, the loss of large excavators can reduce

bioerosion, whereas other processes that are supported by less-targeted species may be maintained through compensatory feeding by smaller fish (Bellwood et al., 2012).

Our synthesis of foraging metrics revealed variance among species that emphasizes the importance of defining species-specific relationships (Ruttenberg et al., 2019). For example, the elevated bite areas, volumes, and proportions of scars of *Chlorurus microrhinos* drove the overall model estimates for excavator *Chlorurus* spp. as a function-genus group. Although these higher-level models were useful when we lacked species-specific models for particular excavating species (e.g., *C. frontalis*), we may have overestimated the functional impact of those species. Similarly, individual rates of algal consumption would be improved with species-specific estimates of algal biomass removed per bite, rather than applying general equations for acanthurids and browser scarines (Kelly et al., 2017).

Lastly, we highlight the need for consistent reporting of metadata to accompany observations of foraging behavior in order to better account for known sources of variance when synthesizing multiple datasets, and to understand important caveats when applying outputs to local surveys. We detected variance in bite rate with SST among only seven species, although the lack of a relationship with SST may reflect a limited range in SST values across observations of a given species. Reporting in situ water temperature when observing foraging behavior of herbivores would enhance our understanding of finer scale variance in bite rates, as has been demonstrated with seasonal variance in temperature (Afeworki et al., 2013; Bellwood, 1995; Ong & Holland, 2010; Smith, 2008). In addition, herbivores exhibit diel feeding patterns (Bellwood, 1995; Bonaldo & Bellwood, 2008; Khait et al., 2013; Polunin et al., 1995) and bite rates can further vary with depth (Brokovich et al., 2010; Fox & Bellwood, 2007). Only about a third of the studies we incorporated in our synthesis provided information about either of these variables, and those that did consisted of observations of bite rates that were skewed toward shallower depths of <5–10 m. The Pacific-wide surveys we assessed span a broader depth range of >0–30 m; thus, we might expect the herbivory we estimated to further vary at deeper depths. We also recommend capturing the benthic composition of reef areas where fish are observed (e.g., Bejarano, 2009; Kelly et al., 2016) to include resource availability (e.g., percent cover of macroalgae or turf) as a covariate in syntheses of foraging metrics.

To enhance the accuracy of estimates of herbivory on coral reefs, a relative metric of diet composition (i.e., selectivity, or the amount of resource consumed relative to the amount of resource available) could be incorporated into estimates. There is also a clear need to

broaden the types of organisms we can assess. Efforts to date have focused almost entirely on foraging by acanthurids and scarines, yet other taxa such as siganids and kyphosids are common and abundant herbivores in the Indo-Pacific (Choat et al., 2002; Fox & Bellwood, 2008; Hoey et al., 2013; Hoey & Bellwood, 2009; Loffler et al., 2015; Michael et al., 2013; Vergés et al., 2012). An even more inclusive approach would consider any fish known to ingest algae during any life stage. For example, we accounted for shifts in feeding mode with size among excavating species that function as scrapers prior to transitioning to excavators (Bonaldo et al., 2014; Ong & Holland, 2010) and included individuals of *Naso* spp. only when their size corresponded with algal browsing (Green & Bellwood, 2009). This flexibility supports the call for adaptive functional groups (Bellwood et al., 2018) and demonstrates the advantage of using relationships that allow for size-related shifts in relevant foraging metrics. Furthermore, interference competition between herbivorous fishes and urchins can impact levels of algal consumption (Hay & Taylor, 1985) and urchins can be as effective as parrotfish in preventing algal-turf dominance on some reefs (Humphries et al., 2020). By considering any organisms with herbivory as a component of their niche, we can better determine the degree of functional redundancy in an ecosystem as well as the extent to which ecosystem function is maintained on reefs subjected to local disturbances or human impacts.

## CONCLUSION

We have provided the framework to estimate herbivory in the Pacific, expanding on previous efforts (e.g., Lange et al., 2020; Perry et al., 2022; Ruttenberg et al., 2019) to assess functional impact beyond parrotfishes. As in other locations (Lange et al., 2020; Perry et al., 2022; Ruttenberg et al., 2019), we found herbivory in the Pacific is determined by a combination of fish biomass, species composition (including key herbivores), and population size structure. We therefore conclude that although nonlinear increases in rates of herbivory with total biomass suggests the potential for threshold values, we too advise against defining management targets based on thresholds of total biomass alone (Ruttenberg et al., 2019). Future work should relate rates of herbivory to reef condition and benthic composition, and incorporate temporal assessments to elucidate when and where ecological processes are enhanced (e.g., positive feedback following disturbance; Mumby & Steneck, 2008; Taylor et al., 2020; van de Leemput et al., 2016) versus impeded (e.g., grazing refuges; Bozec et al., 2019). Ultimately, this information should help

managers quantify location-specific targets needed to maintain sufficient levels of ecological processes. Estimating herbivory should also help with assessments of candidate sites for reef restoration actions such as coral outplanting (Ladd et al., 2018; Seraphim et al., 2020). Lastly, synthesis and meta-analysis will continue to serve as a critical tool to ascertain general patterns in the functional impact of organisms. We have highlighted gaps in foraging observations of herbivores so that future research can be strategically leveraged to minimize the effort required to enhance our overall understanding of ecological processes and ecosystem function.

## ACKNOWLEDGMENTS

We are grateful to all the authors of the studies whose hard-earned data informed the equations in the database provided by our synthesis, especially those who generously shared their raw data in response to our requests. This work was funded by the National Oceanic and Atmospheric Administration (NOAA) Coral Reef Conservation Program (CRCP; project number 31349), which also funded the data collected by the National Coral Reef Monitoring Program (NCRMP; CRCP project number 743).

## CONFLICT OF INTEREST STATEMENT

The authors declare no conflicts of interest.

## DATA AVAILABILITY STATEMENT

Two sets of data were analyzed: (1) a database of fish foraging observations compiled by the authors, and (2) fish survey data collected in the Pacific by the National Coral Reef Monitoring Program (NCRMP). Data are available from the NOAA National Centers for Environmental Information (NCEI) as follows:

Database of foraging observations:


1. Appendix S1: Table S1 provides an overview of all the data sources compiled and analyzed, and an indicator (“Public data”) of data that we have made publicly available.
2. These public data are available from NCEI: <https://accession.nodc.noaa.gov/0259399>.
3. Remaining data supporting this research are sensitive and not available publicly. Appendix S1: Table S1 indicates which data are not public and were provided to us directly from each cited source who owns the rights to these data. The citation for each source is provided, and data can be requested by contacting the corresponding author using the contact information provided therein. Restrictions may apply at the discretion of the respective parties who own the rights to the data.

NCRMP surveys: all fish data analyzed and species-specific length–weight parameters are publicly available from NCEI.

1. American Samoa: <https://accession.nodc.noaa.gov/0183543>.
2. Main Hawaiian Islands: <https://accession.nodc.noaa.gov/0210958>.
3. Northwestern Hawaiian Islands: <https://accession.nodc.noaa.gov/0181483>.
4. Guam and the Commonwealth of the Northern Mariana Islands: <https://accession.nodc.noaa.gov/0166381>.
5. Pacific Remote Islands Area: <https://accession.nodc.noaa.gov/0183544>.

All R code and associated datasets (Kindinger et al., 2024) are available from Figshare: <https://doi.org/10.6084/m9.figshare.23672010.v1>.

## ORCID

Tye L. Kindinger  <https://orcid.org/0000-0002-4946-790X>

## REFERENCES

- Afeworki, Y., J. J. Videler, and J. H. Bruggemann. 2013. “Seasonally Changing Habitat Use Patterns among Roving Herbivorous Fishes in the Southern Red Sea: The Role of Temperature and Algal Community Structure.” *Coral Reefs* 32: 475–485.
- Ayotte, P., K. McCoy, A. Heenan, I. D. Williams, and J. P. Zamzow. 2015. “Coral Reef Ecosystem Program Standard Operating Procedures: Data Collection for Rapid Ecological Assessment Fish Surveys.” <https://doi.org/10.7289/v5sn06zt>.
- Bannar-Martin, K. H., C. T. Kremer, S. K. M. Ernest, M. A. Leibold, H. Auge, J. Chase, S. A. J. Declerck, et al. 2018. “Integrating Community Assembly and Biodiversity to Better Understand Ecosystem Function: The Community Assembly and the Functioning of Ecosystems (CAFE) Approach.” *Ecology Letters* 21: 167–180.
- Bates, D., M. Mächler, B. Bolker, and S. Walker. 2015. “Fitting Linear Mixed-Effects Models Using lme4.” *Journal of Statistical Software* 67: 1–48.
- Baum, J. K., D. C. Claar, K. L. Tietjen, J. M. T. Magel, D. G. Maucieri, K. M. Cobb, and J. M. McDevitt-Irwin. 2023. “Transformation of Coral Communities Subjected to an Unprecedented Heatwave Is Modulated by Local Disturbance. Science.” *Advances* 9: eabq5615.
- Baumann, J. H., L. Z. Zhao, A. C. Stier, and J. F. Bruno. 2022. “Remoteness Does Not Enhance Coral Reef Resilience.” *Global Change Biology* 28: 417–428.
- Bejarano Chavarro, S., P. J. Mumby, and Y. Golbuu. 2014. “Changes in the Spear Fishery of Herbivores Associated with Closed Grouper Season in Palau, Micronesia.” *Animal Conservation* 17: 133–143.
- Bejarano, S. 2009. “Predicting the Habitat Distribution and Grazing of Coral Reef Fish.” Doctoral diss., University of Exeter.
- Bellwood, D. R. 1995. “Direct Estimate of Bioerosion by Two Parrotfish Species, *Chlorurus gibbus* and *C. sordidus*, on the Great Barrier Reef, Australia.” *Marine Biology* 121: 419–429.
- Bellwood, D. R., A. S. Hoey, and J. H. Choat. 2003. “Limited Functional Redundancy in High Diversity Systems: Resilience and Ecosystem Function on Coral Reefs.” *Ecology Letters* 6: 281–85.
- Bellwood, D. R., A. S. Hoey, and T. P. Hughes. 2012. “Human Activity Selectively Impacts the Ecosystem Roles of Parrotfishes on Coral Reefs.” *Proceedings of the Royal Society B: Biological Sciences* 279: 1621–29.
- Bellwood, D. R., T. P. Hughes, C. Folke, and M. Nyström. 2004. “Confronting the Coral Reef Crisis.” *Nature* 429: 827–833.
- Bellwood, D. R., T. P. Hughes, and A. S. Hoey. 2006. “Sleeping Functional Group Drives Coral-Reef Recovery.” *Current Biology* 16: 2434–39.
- Bellwood, D. R., R. P. Streit, S. J. Brandl, and S. B. Tebbett. 2018. “The Meaning of the Term ‘Function’ in Ecology: A Coral Reef Perspective.” *Functional Ecology* 33: 948–961.
- Bonaldo, R., A. Hoey, and D. Bellwood. 2014. “The Ecosystem Roles of Parrotfishes on Tropical Reefs.” *Oceanography and Marine Biology* 52: 81–132.
- Bonaldo, R. M., and D. R. Bellwood. 2008. “Size-Dependent Variation in the Functional Role of the Parrotfish *Scarus rivulatus* on the Great Barrier Reef, Australia.” *Marine Ecology Progress Series* 360: 237–244.
- Bozec, Y.-M., C. Doropoulos, G. Roff, and P. J. Mumby. 2019. “Transient Grazing and the Dynamics of an Unanticipated Coral–Algal Phase Shift.” *Ecosystems* 22: 296–311.
- Brandl, S. J., D. B. Rasher, I. M. Côté, J. M. Casey, E. S. Darling, J. S. Lefcheck, and J. E. Duffy. 2019. “Coral Reef Ecosystem Functioning: Eight Core Processes and the Role of Biodiversity.” *Frontiers in Ecology and the Environment* 17: 445–454.
- Brokovich, E., I. Ayalon, S. Einbinder, N. Segev, Y. Shaked, A. Genin, S. Kark, and M. Kiflawi. 2010. “Grazing Pressure on Coral Reefs Decreases across a Wide Depth Gradient in the Gulf of Aqaba, Red Sea.” *Marine Ecology Progress Series* 399: 69–80.
- Brooks, M. E., K. Kasper, K. J. van Benthem, A. Magnusson, C. W. Berg, A. Nielsen, H. J. Skaug, M. Mächler, and B. M. Bolker. 2017. “glmmTMB Balances Speed and Flexibility among Packages for Zero-Inflated Generalized Linear Mixed Modeling.” *The R Journal* 9: 378.
- Burgess, S. C., E. C. Johnston, A. S. J. Wyatt, J. J. Leichter, and P. J. Edmunds. 2021. “Response Diversity in Corals: Hidden Differences in Bleaching Mortality among Cryptic *Pocillopora* Species.” *Ecology* 102: e03324.
- Burkepile, D. E., and M. E. Hay. 2008. “Herbivore Species Richness and Feeding Complementarity Affect Community Structure and Function on a Coral Reef.” *Proceedings of the National Academy of Sciences of the United States of America* 105: 16201–6.
- Caldwell, Z. R., B. J. Zgliczynski, G. J. Williams, and S. A. Sandin. 2016. “Reef Fish Survey Techniques: Assessing the Potential for Standardizing Methodologies.” *PLoS One* 11: e0153066.
- Choat, J. H., K. D. Clements, and W. D. Robbins. 2002. “The Trophic Status of Herbivorous Fishes on Coral Reefs.” *Marine Biology* 140: 613–623.

- Chung, A., T. Oliver, J. Gove, K. Gorospe, D. White, K. Davidson, and W. Walsh. 2019. "Translating Resilience-Based Management Theory to Practice for Coral Bleaching Recovery in Hawai'i." *Marine Policy* 99: 58–68.
- Cinner, J. E., T. R. McClanahan, N. A. J. Graham, M. S. Pratchett, S. K. Wilson, and J.-B. Raina. 2009. "Gear-Based Fisheries Management as a Potential Adaptive Response to Climate Change and Coral Mortality." *Journal of Applied Ecology* 46: 724–732.
- Doney, S. C., M. Ruckelshaus, J. E. Duffy, J. P. Barry, F. Chan, C. A. English, H. M. Galindo, et al. 2012. "Climate Change Impacts on Marine Ecosystems." *Annual Review of Marine Science* 4: 11–37.
- Eakin, C. M., H. P. A. Sweatman, and R. E. Brainard. 2019. "The 2014–2017 Global-Scale Coral Bleaching Event: Insights and Impacts." *Coral Reefs* 38: 539–545.
- Edwards, C. B., A. M. Friedlander, A. G. Green, M. J. Hardt, E. Sala, H. P. Sweatman, I. D. Williams, B. Zgliczynski, S. A. Sandin, and J. E. Smith. 2014. "Global Assessment of the Status of Coral Reef Herbivorous Fishes: Evidence for Fishing Effects." *Proceedings of the Royal Society B: Biological Sciences* 281: 20131835.
- Fox, R. J., and D. R. Bellwood. 2007. "Quantifying Herbivory across a Coral Reef Depth Gradient." *Marine Ecology Progress Series* 339: 49–59.
- Fox, R. J., and D. R. Bellwood. 2008. "Remote Video Bioassays Reveal the Potential Feeding Impact of the Rabbitfish *Siganus canaliculatus* (f. Siganidae) on an Inner-Shelf Reef of the Great Barrier Reef." *Coral Reefs* 27: 605–615.
- Froese, R., and D. Pauly. 2021. "Fishbase." [www.fishbase.org](http://www.fishbase.org).
- Gamfeldt, L., J. S. Lefcheck, J. E. K. Byrnes, B. J. Cardinale, J. E. Duffy, and J. N. Griffin. 2015. "Marine Biodiversity and Ecosystem Functioning: What's Known and What's Next?" *Oikos* 124: 252–265.
- Gardner, T. A., I. M. Côté, J. A. Gill, A. Grant, and A. R. Watkinson. 2003. "Long-Term Region-Wide Declines in Caribbean Corals." *Science* 301: 958–960.
- Gissi, E., E. Manea, A. D. Mazaris, S. Frascchetti, V. Almpanidou, S. Bevilacqua, M. Coll, et al. 2021. "A Review of the Combined Effects of Climate Change and Other Local Human Stressors on the Marine Environment." *Science of the Total Environment* 755: 142564.
- Graham, N. A., D. R. Bellwood, J. E. Cinner, T. P. Hughes, A. V. Norström, and M. Nyström. 2013. "Managing Resilience to Reverse Phase Shifts in Coral Reefs." *Frontiers in Ecology and the Environment* 11: 541–48.
- Graham, N. A. J., S. Jennings, M. A. MacNeil, D. Mouillot, and S. K. Wilson. 2015. "Predicting Climate-Driven Regime Shifts versus Rebound Potential in Coral Reefs." *Nature* 518: 94–97.
- Green, A. L., and D. R. Bellwood, eds. 2009. *Monitoring Functional Groups of Herbivorous Reef Fishes as Indicators of Coral Reef Resilience: A Practical Guide for Coral Reef Managers in the Asia Pacific Region*, 2009th ed. Gland: International Union for Conservation of Nature.
- Harley, C. D. G., A. Randall Hughes, K. M. Hultgren, B. G. Miner, C. J. B. Sorte, C. S. Thornber, L. F. Rodriguez, L. Tomanek, and S. L. Williams. 2006. "The Impacts of Climate Change in Coastal Marine Systems." *Ecology Letters* 9: 228–241.
- Hay, M. E., and P. R. Taylor. 1985. "Competition between Herbivorous Fishes and Urchins on Caribbean Reefs." *Oecologia* 65: 591–98.
- He, Q., and B. R. Silliman. 2019. "Climate Change, Human Impacts, and Coastal Ecosystems in the Anthropocene." *Current Biology* 29: R1021–R1035.
- Heenan, A., A. S. Hoey, G. J. Williams, and I. D. Williams. 2016. "Natural Bounds on Herbivorous Coral Reef Fishes." *Proceedings of the Royal Society B: Biological Sciences* 283: 20161716.
- Heenan, A., I. D. Williams, T. Acoba, A. DesRochers, R. K. Kosaki, T. Kanemura, M. O. Nadon, and R. E. Brainard. 2017. "Long-Term Monitoring of Coral Reef Fish Assemblages in the Western Central Pacific." *Scientific Data* 4: 170176.
- Hobbs, R. J., E. Higgs, and J. A. Harris. 2009. "Novel Ecosystems: Implications for Conservation and Restoration." *Trends in Ecology & Evolution* 24: 599–605.
- Hoegh-Guldberg, O., P. J. Mumby, A. J. Hooten, R. S. Steneck, P. Greenfield, E. Gomez, C. D. Harvell, et al. 2007. "Coral Reefs under Rapid Climate Change and Ocean Acidification." *Science* 318: 1737–42.
- Hoey, A. S. 2018. "Feeding in Parrotfishes: The Influence of Species, Body Size, and Temperature." In *Biology of Parrotfishes*, edited by A. S. Hoey and R. M.onaldo, 119–133. Boca Raton, FL: CRC Press.
- Hoey, A. S., and D. R. Bellwood. 2008. "Cross-Shelf Variation in the Role of Parrotfishes on the Great Barrier Reef." *Coral Reefs* 27: 37–47.
- Hoey, A. S., and D. R. Bellwood. 2009. "Limited Functional Redundancy in a High Diversity System: Single Species Dominates Key Ecological Process on Coral Reefs." *Ecosystems* 12: 1316–28.
- Hoey, A. S., and D. R. Bellwood. 2011. "Suppression of Herbivory by Macroalgal Density: A Critical Feedback on Coral Reefs?: Macroalgal Density Suppresses Herbivory." *Ecology Letters* 14: 267–273.
- Hoey, A. S., S. J. Brandl, and D. R. Bellwood. 2013. "Diet and Cross-Shelf Distribution of Rabbitfishes (f. Siganidae) on the Northern Great Barrier Reef: Implications for Ecosystem Function." *Coral Reefs* 32: 973–984.
- Hooper, D. U., F. S. Chapin, J. J. Ewel, A. Hector, P. Inchausti, S. Lavorel, J. H. Lawton, et al. 2005. "Effects of Biodiversity on Ecosystem Functioning: A Consensus of Current Knowledge." *Ecological Monographs* 75: 3–35.
- Houk, P., K. Rhodes, J. Cuetos-Bueno, S. Lindfield, V. Fread, and J. L. McIlwain. 2012. "Commercial Coral-Reef Fisheries across Micronesia: A Need for Improving Management." *Coral Reefs* 31: 13–26.
- Hughes, T. P., K. D. Anderson, S. R. Connolly, S. F. Heron, J. T. Kerry, J. M. Lough, A. H. Baird, et al. 2018. "Spatial and Temporal Patterns of Mass Bleaching of Corals in the Anthropocene." *Science* 359: 80–83.
- Hughes, T. P., J. T. Kerry, A. H. Baird, S. R. Connolly, A. Dietzel, C. M. Eakin, S. F. Heron, et al. 2018. "Global Warming Transforms Coral Reef Assemblages." *Nature* 556: 492–96.
- Hughes, T. P., M. J. Rodrigues, D. R. Bellwood, D. Ceccarelli, O. Hoegh-Guldberg, L. McCook, N. Moltschanivskyj, M. S. Pratchett, R. S. Steneck, and B. Willis. 2007. "Phase Shifts, Herbivory, and the Resilience of Coral Reefs to Climate Change." *Current Biology* 17: 360–65.
- Humphries, A. T., T. R. McClanahan, and C. D. McQuaid. 2020. "Algal Turf Consumption by Sea Urchins and Fishes Is Mediated by Fisheries Management on Coral Reefs in Kenya." *Coral Reefs* 39: 1137–46.



- Kelly, E. L. A., Y. Eynaud, S. M. Clements, M. Gleason, R. T. Sparks, I. D. Williams, and J. E. Smith. 2016. "Investigating Functional Redundancy versus Complementarity in Hawaiian Herbivorous Coral Reef Fishes." *Oecologia* 182: 1151–63.
- Kelly, E. L. A., Y. Eynaud, I. D. Williams, R. T. Sparks, M. L. Dailer, S. A. Sandin, and J. E. Smith. 2017. "A Budget of Algal Production and Consumption by Herbivorous Fish in an Herbivore Fisheries Management Area, Maui, Hawaii." *Ecosphere* 8: e01899.
- Khait, R., U. Obolski, L. Hadany, and A. Genin. 2013. "Food Selectivity and Diet Switch Can Explain the Slow Feeding of Herbivorous Coral-Reef Fishes during the Morning." *PLoS One* 8: e82391.
- Kindinger, T. L., T. C. Adam, J. K. Baum, S. A. Dimoff, A. S. Hoey, and I. D. Williams. 2024. "R Code and Associated Data for Kindinger et al. 2023 Submission to Ecosphere." Figshare. <https://doi.org/10.6084/m9.figshare.23672010.v1>.
- Ladd, M. C., M. W. Miller, J. H. Hunt, W. C. Sharp, and D. E. Burkepile. 2018. "Harnessing Ecological Processes to Facilitate Coral Restoration." *Frontiers in Ecology and the Environment* 16: 239–247.
- Lange, I. D., C. T. Perry, K. M. Morgan, R. Roche, C. E. Benkwitt, and N. A. Graham. 2020. "Site-Level Variation in Parrotfish Grazing and Bioerosion as a Function of Species-Specific Feeding Metrics." *Diversity* 12: 379–395.
- Lefcheck, J. S., J. E. K. Byrnes, F. Isbell, L. Gamfeldt, J. N. Griffin, N. Eisenhauer, M. J. S. Hensel, A. Hector, B. J. Cardinale, and J. E. Duffy. 2015. "Biodiversity Enhances Ecosystem Multifunctionality across Trophic Levels and Habitats." *Nature Communications* 6: 6936.
- Lefcheck, J. S., A. A. Innes-Gold, S. J. Brandl, R. S. Steneck, R. E. Torres, and D. B. Rasher. 2019. "Tropical Fish Diversity Enhances Coral Reef Functioning across Multiple Scales." *Science Advances* 5: eaav6420.
- Loffler, Z., D. R. Bellwood, and A. S. Hoey. 2015. "Among-Habitat Algal Selectivity by Browsing Herbivores on an Inshore Coral Reef." *Coral Reefs* 34: 597–605.
- Lokrantz, J., M. Nyström, M. Thyresson, and C. Johansson. 2008. "The Non-linear Relationship between Body Size and Function in Parrotfishes." *Coral Reefs* 27: 967–974.
- Mccauley, D. J., H. S. Young, R. Guevara, G. J. Williams, E. A. Power, R. B. Dunbar, D. W. Bird, W. H. Durham, and F. Micheli. 2014. "Positive and Negative Effects of a Threatened Parrotfish on Reef Ecosystems." *Conservation Biology* 28: 1312–21.
- McClanahan, T. R., S. D. Donner, J. A. Maynard, M. A. MacNeil, N. A. J. Graham, J. Maina, A. C. Baker, et al. 2012. "Prioritizing Key Resilience Indicators to Support Coral Reef Management in a Changing Climate." *PLoS One* 7: e42884.
- Michael, P., G. Hyndes, M. Vanderklift, and A. Vergés. 2013. "Identity and Behaviour of Herbivorous Fish Influence Large-Scale Spatial Patterns of Macroalgal Herbivory in a Coral Reef." *Marine Ecology Progress Series* 482: 227–240.
- Moore, J. A. Y., L. M. Bellchambers, M. R. Depczynski, R. D. Evans, S. N. Evans, S. N. Field, K. J. Friedman, et al. 2012. "Unprecedented Mass Bleaching and Loss of Coral across 12° of Latitude in Western Australia in 2010–11." *PLoS One* 7: e51807.
- Morgan, K. M., and P. S. Kench. 2016. "Parrotfish Erosion Underpins Reef Growth, Sand Talus Development and Island Building in the Maldives." *Sedimentary Geology* 341: 50–57.
- Mumby, P. J., and R. S. Steneck. 2008. "Coral Reef Management and Conservation in Light of Rapidly Evolving Ecological Paradigms." *Trends in Ecology & Evolution* 23: 555–563.
- Nash, K. L., N. Graham, and D. R. Bellwood. 2013. "Fish Foraging Patterns, Vulnerability to Fishing and Implications for the Management of Ecosystem Function across Scales." *Ecological Applications* 23: 1632–44.
- Ong, L., and K. N. Holland. 2010. "Bioerosion of Coral Reefs by Two Hawaiian Parrotfishes: Species, Size Differences and Fishery Implications." *Marine Biology* 157: 1313–23.
- Pecl, G. T., M. B. Araújo, J. D. Bell, J. Blanchard, T. C. Bonebrake, I.-C. Chen, T. D. Clark, et al. 2017. "Biodiversity Redistribution under Climate Change: Impacts on Ecosystems and Human Well-Being." *Science* 355: eaai9214.
- Perry, C. T., E. N. Edinger, P. S. Kench, G. N. Murphy, S. G. Smithers, R. S. Steneck, and P. J. Mumby. 2012. "Estimating Rates of Biologically Driven Coral Reef Framework Production and Erosion: A New Census-Based Carbonate Budget Methodology and Applications to the Reefs of Bonaire." *Coral Reefs* 31: 853–868.
- Perry, C. T., I. D. Lange, and F. A. Januchowski-Hartley. 2018. "ReefBudget Indo Pacific: Online Resource and Methodology." <http://geography.exeter.ac.uk/reefbudget/>.
- Perry, C. T., M. A. Salter, I. D. Lange, D. P. Kochan, A. R. Harborne, and N. A. J. Graham. 2022. "Geo-Ecological Functions Provided by Coral Reef Fishes Vary among Regions and Impact Reef Carbonate Cycling Regimes." *Ecosphere* 13: e4288.
- Poloczanska, E. S., C. J. Brown, W. J. Sydeman, W. Kiessling, D. S. Schoeman, P. J. Moore, K. Brander, et al. 2013. "Global Imprint of Climate Change on Marine Life." *Nature Climate Change* 3: 919–925.
- Polunin, N. V. C., M. Harmelin-Vivien, and R. Galzin. 1995. "Contrasts in Algal Food Processing among Five Herbivorous Coral-Reef Fishes." *Journal of Fish Biology* 47: 455–465.
- Pratchett, M. S., S. F. Heron, C. Mellin, and G. S. Cumming. 2021. "Recurrent Mass-Bleaching and the Potential for Ecosystem Collapse on Australia's Great Barrier Reef." In *Ecosystem Collapse and Climate Change*, edited by J. G. Canadell and R. B. Jackson, 265–289. Cham: Springer International Publishing.
- R Core Team. 2021. *R: A Language and Environment for Statistical Computing*. Vienna: R Foundation for Statistical Computing.
- Rasher, D. B., A. S. Hoey, and M. E. Hay. 2013. "Consumer Diversity Interacts with Prey Defenses to Drive Ecosystem Function." *Ecology* 94: 1347–58.
- Robinson, J. P. W., J. M. McDevitt-Irwin, J. Dajka, J. Hadj-Hammou, S. Howlett, A. Graba-Landry, A. S. Hoey, K. L. Nash, S. K. Wilson, and N. A. J. Graham. 2019. "Habitat and Fishing Control Grazing Potential on Coral Reefs." *Functional Ecology* 34: 240–251.
- Russ, G. R., S.-L. A. Questel, J. R. Rizzari, and A. C. Alcala. 2015. "The Parrotfish–Coral Relationship: Refuting the Ubiquity of a Prevailing Paradigm." *Marine Biology* 162: 2029–45.
- Ruttenberg, B. I., T. C. Adam, A. Duran, and D. E. Burkepile. 2019. "Identity of Coral Reef Herbivores Drives Variation in Ecological Processes over Multiple Spatial Scales." *Ecological Applications* 29: e01893.
- Sabater, M. G., and B. P. Carroll. 2009. "Trends in Reef Fish Population and Associated Fishery after Three Millennia of

- Resource Utilization and a Century of Socio-Economic Changes in American Samoa." *Reviews in Fisheries Science* 17: 318–335.
- Samoilys, M. A., and G. Carlos. 2000. "Determining Methods of Underwater Visual Census for Estimating the Abundance of Coral Reef Fishes." *Environmental Biology of Fishes* 57: 289–304.
- Seraphim, M. J., K. A. Sloman, M. E. Alexander, N. Janetski, J. Jompa, R. Ambo-Rappe, D. Snellgrove, F. Mars, and A. R. Harborne. 2020. "Interactions between Coral Restoration and Fish Assemblages: Implications for Reef Management." *Journal of Fish Biology* 97: 633–655.
- Skirving, W. J., S. F. Heron, B. L. Marsh, G. Liu, J. L. De La Cour, E. F. Geiger, and C. M. Eakin. 2019. "The Relentless March of Mass Coral Bleaching: A Global Perspective of Changing Heat Stress." *Coral Reefs* 38: 547–557.
- Smith, T. B. 2008. "Temperature Effects on Herbivory for an Indo-Pacific Parrotfish in Panamá: Implications for Coral–Algal Competition." *Coral Reefs* 27: 397–405.
- Smith, T. B., P. W. Glynn, J. L. Maté, L. T. Toth, and J. Gyory. 2014. "A Depth Refugium from Catastrophic Coral Bleaching Prevents Regional Extinction." *Ecology* 95: 1663–73.
- Stijnen, T., T. H. Hamza, and P. Özdemir. 2010. "Random Effects Meta-Analysis of Event Outcome in the Framework of the Generalized Linear Mixed Model with Applications in Sparse Data." *Statistics in Medicine* 29: 3046–67.
- Taylor, B. M., C. E. Benkwitt, H. Choat, K. D. Clements, N. A. J. Graham, and M. G. Meekan. 2020. "Synchronous Biological Feedbacks in Parrotfishes Associated with Pantropical Coral Bleaching." *Global Change Biology* 26: 1285–94.
- Taylor, B. M., A. E. K. Duenas, and I. D. Lange. 2022. "Decadal Changes in Parrotfish Assemblages around Reefs of Guam, Micronesia." *Coral Reefs* 41: 1693–1703.
- Todd, P. A., E. C. Heery, L. H. L. Loke, R. H. Thurstan, D. J. Kotze, and C. Swan. 2019. "Towards an Urban Marine Ecology: Characterizing the Drivers, Patterns and Processes of Marine Ecosystems in Coastal Cities." *Oikos* 128: 1215–42.
- van de Leemput, I. A., T. P. Hughes, E. H. van Nes, and M. Scheffer. 2016. "Multiple Feedbacks and the Prevalence of Alternate Stable States on Coral Reefs." *Coral Reefs* 35: 857–865.
- van Hooijdonk, R., J. Maynard, J. Tamelander, J. Gove, G. Ahmadi, L. Raymundo, G. Williams, S. F. Heron, and S. Planes. 2016. "Local-Scale Projections of Coral Reef Futures and Implications of the Paris Agreement." *Scientific Reports* 6: 39666.
- Vergés, A., S. Bennett, and D. R. Bellwood. 2012. "Diversity among Macroalgae-Consuming Fishes on Coral Reefs: A Transcontinental Comparison." *PLoS One* 7: e45543.
- Viechtbauer, W. 2010. "Conducting Meta-Analyses in R with the Metafor Package." *Journal of Statistical Software* 36: 1–48.
- Williams, I. D., T. L. Kindinger, C. S. Couch, W. J. Walsh, D. Minton, and T. A. Oliver. 2019. "Can Herbivore Management Increase the Persistence of Indo-Pacific Coral Reefs?" *Frontiers in Marine Science* 6: 557.
- Williams, I. D., B. L. Richards, S. A. Sandin, J. K. Baum, R. E. Schroeder, M. O. Nadon, B. Zgliczynski, P. Craig, J. L. McIlwain, and R. E. Brainard. 2010. "Differences in Reef Fish Assemblages between Populated and Remote Reefs Spanning Multiple Archipelagos across the Central and Western Pacific." *Journal of Marine Sciences* 2011: e826234.
- Worm, B., E. B. Barbier, N. Beaumont, J. E. Duffy, C. Folke, B. S. Halpern, J. B. C. Jackson, et al. 2006. "Impacts of Biodiversity Loss on Ocean Ecosystem Services." *Science* 314: 787–790.
- Yarlett, R. T., C. T. Perry, R. W. Wilson, and K. E. Philpot. 2018. "Constraining Species-Size Class Variability in Rates of Parrotfish Bioerosion on Maldivian Coral Reefs: Implications for Regional-Scale Bioerosion Estimates." *Marine Ecology Progress Series* 590: 155–169.

## SUPPORTING INFORMATION

Additional supporting information can be found online in the Supporting Information section at the end of this article.

**How to cite this article:** Kindinger, Tye L., Thomas C. Adam, Julia K. Baum, Sean A. Dimoff, Andrew S. Hoey, and Ivor D. Williams. 2024. "Herbivory through the Lens of Ecological Processes across Pacific Coral Reefs." *Ecosphere* 15(2): e4791. <https://doi.org/10.1002/ecs2.4791>